

Cable	Wire Type
A	2#18 typical
B	as per mfg typical

Set: 22

Doors: 134, 166

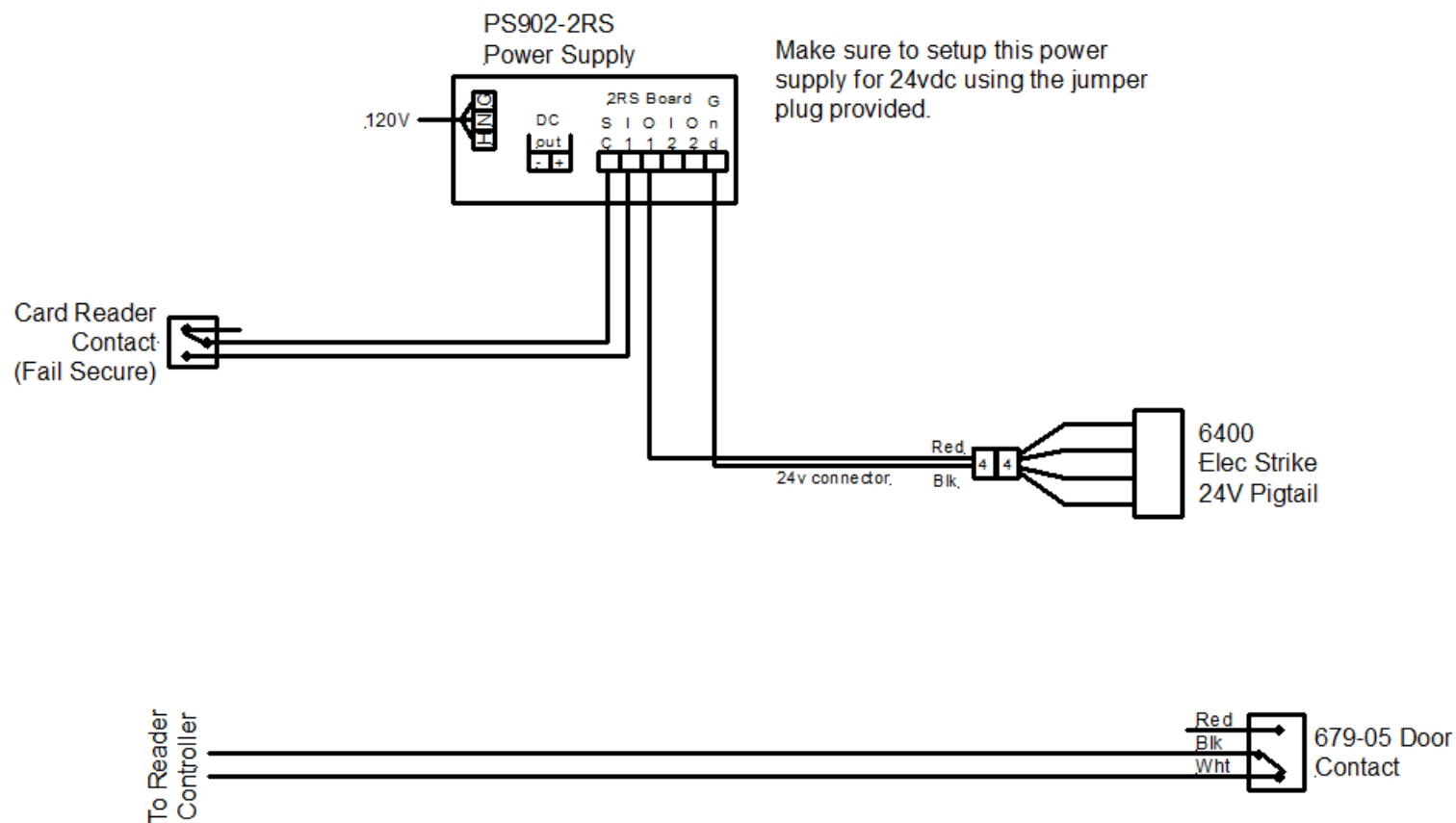


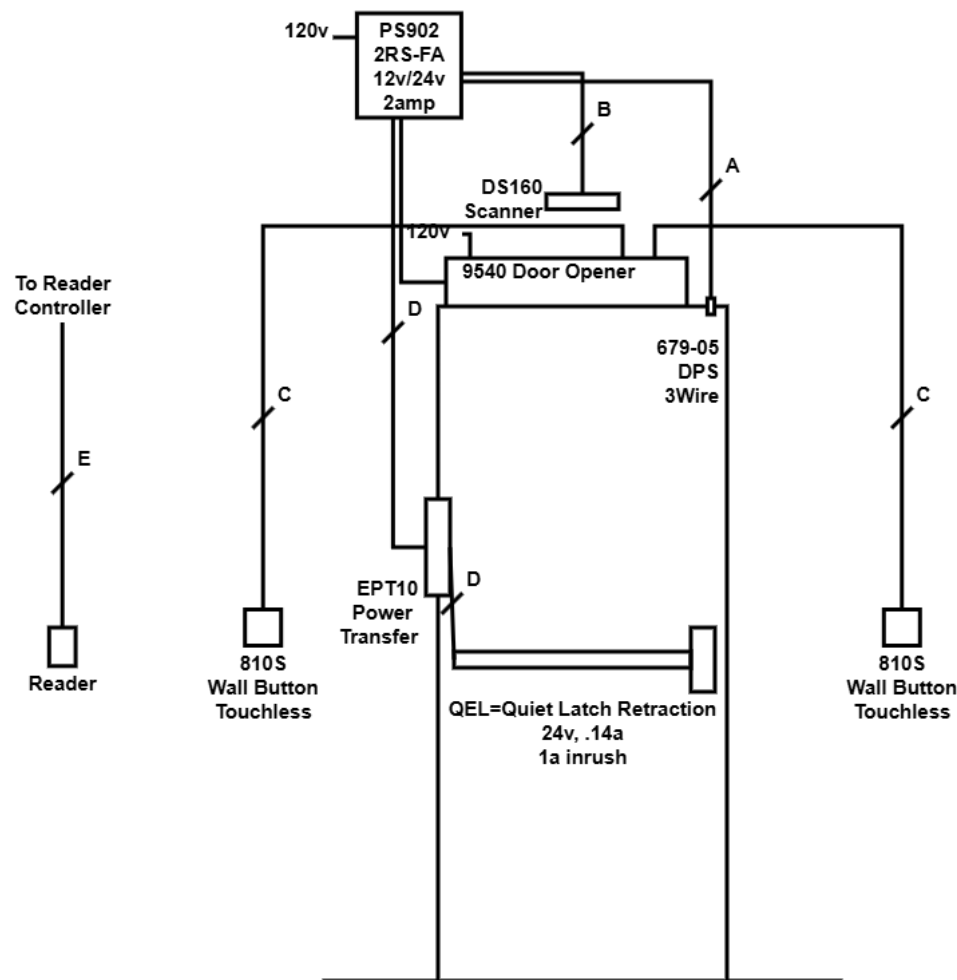
Project: Sample Healthcare  
Anytown, USA

Dwg #: Riser01

Drawn by: RR  
Date: 2025-03-17

These drawings are to be used as a guide to aid the installation of the hardware shown. Make sure to read and understand the instruction manuals that come with each product to verify what is shown on these drawings.





Cable	Wire Type
A	2#18 typical
B	6#18 typical
C	4#18 typical
D	2#18 typical
E	as per mfg typical

Set: 13

Doors: 222, 243

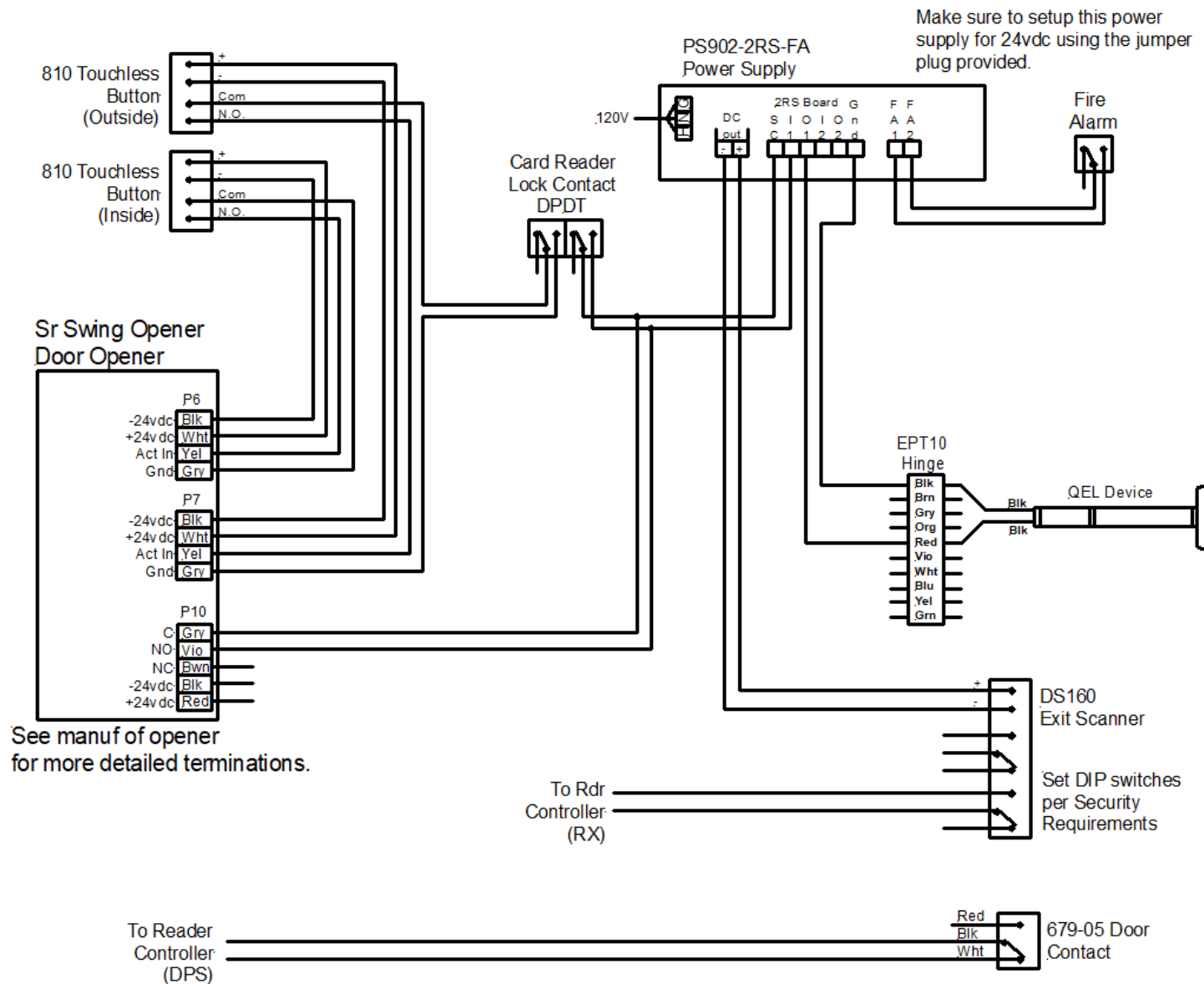


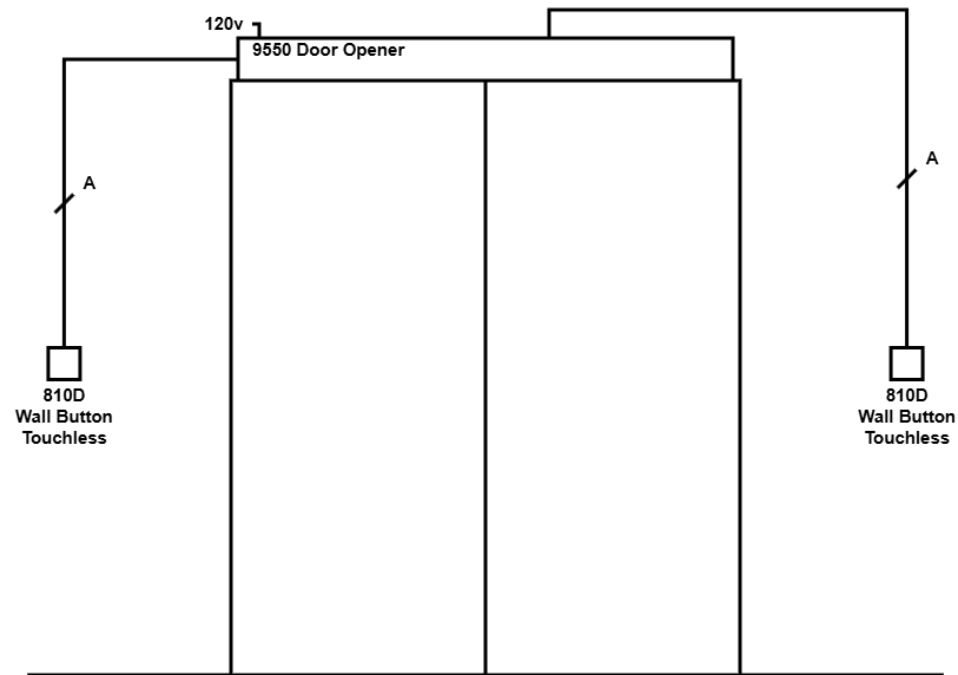
Project: Sample Healthcare  
Anytown, USA

Dwg #: Riser02

Drawn by: RR  
Date: 2025-03-17

These drawings are to be used as a guide to aid the installation of the hardware shown. Make sure to read and understand the instruction manuals that come with each product to verify what is shown on these drawings.





Cable	Wire Type
A	4#18 typical

Set: 67

Doors: 140, 155

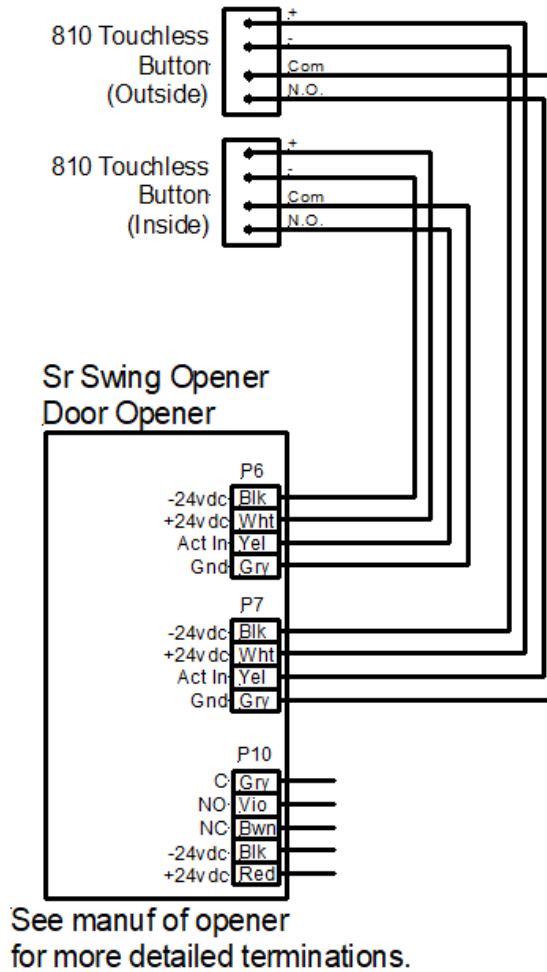


Project: Sample Healthcare  
Anytown, USA

Dwg #: Riser03

Drawn by: RR  
Date: 2025-03-17

These drawings are to be used as a guide to aid the installation of the hardware shown. Make sure to read and understand the instruction manuals that come with each product to verify what is shown on these drawings.



WIRING  
DRAWINGS.com

Project: Sample Healthcare  
Anytown, USA

Dwg #: Point03

Drawn by: RR  
Date: 2025-03-17

These drawings are to be used as a guide to aid the installation of the hardware shown. Make sure to read and understand the instruction manuals that come with each product to verify what is shown on these drawings.